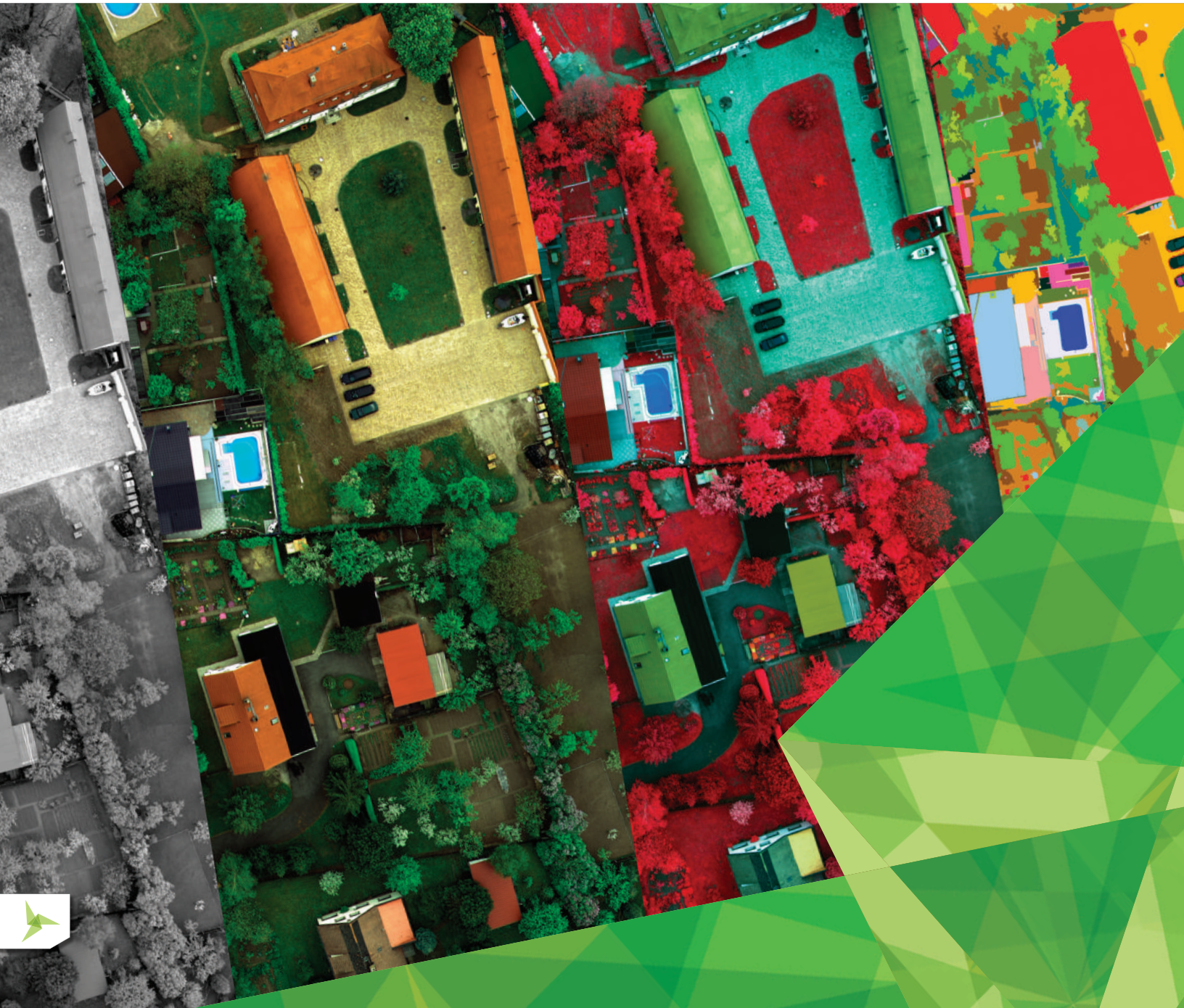




# M.APP CHEST

CLOUD-BASED GEOSPATIAL DATA HOSTING



# HOW DO YOU KEEP GEOSPATIAL DATA SECURE AND ACCESSIBLE?

Over the past decade, our capacity to capture information about the earth's surface has expanded monumentally. Microsatellites launch daily, planes fly more often, and a skyrocketing number of UAV drones help record data over the most challenging of territories. With this expansion of data sources, customers have also come to expect rich, high resolution geospatial data on a very timely basis.

This leaves data providers with a unique challenge. You utilize the most advanced systems for swift and accurate imagery and powerful point cloud collection, but tools for storing and delivering your data remain stuck in last decade's technology. Big data requires powerful storage, security, and delivery; traditionally, this has equated to expensive IT hardware, software, maintenance and expertise.

Today, organizations are looking for simpler and more cost-effective ways to handle their geospatial data, including how to securely store, manage and deliver it.



# INTRODUCING M.APP CHEST



# M.App Chest

M.App Chest makes it simple to house and manage large volume geospatial data. M.App Chest serves both data providers and owners of large geospatial data stores by offering full-scale geospatial content management. It allows you to easily upload, store, and disseminate your data. Get your imagery and point cloud data onto the cloud, access it from anywhere, and distribute it securely with ease via popular web services. M.App Chest even provides optional compression capabilities.

## M.APP CHEST WORKFLOW



## KEY FEATURES

### YOUR DATA, YOUR FORMAT

Stores a wide variety of point cloud and raster imagery formats, various protocols and coordinate systems.

### REALLY BIG DATA

For truly supporting various large size geospatial sources, our limit stops at 100 TB (others stop at 100 GB).

### LIGHTNING-FAST DELIVERY

Get your data (almost) instantly with industry-leading geospatial serving technology.

### STORE, SEARCH, DELIVER

Rich metadata ensures that you can search and find the data you need.

### EASY ACCESS

Stream, download, web service, transform, and tile cache options.

### RESILIENT AND SAFE

Ensure the long-term safety of your investment with Amazon Web Services (AWS).

### SUPPORTS THE HEXAGON SMART M.APP® PLATFORM

Power your Hexagon Smart M.App workflow with data from the M.App Chest.







## WHY USE M.APP CHEST?

Your geospatial data is an expensive investment, and you want to be sure it's housed in a reliable, accessible and cost-effective way. M.App Chest provides a secure, flexible, and safe solution for hosting and accessing your data worldwide.



**NO  
INFRASTRUCTURE**



**FASTER  
SPEEDS**



**BETTER  
SECURITY**



**ALWAYS  
CONNECTED**

## ALL OF YOUR BIG DATA

**LiDAR  
Point Clouds**

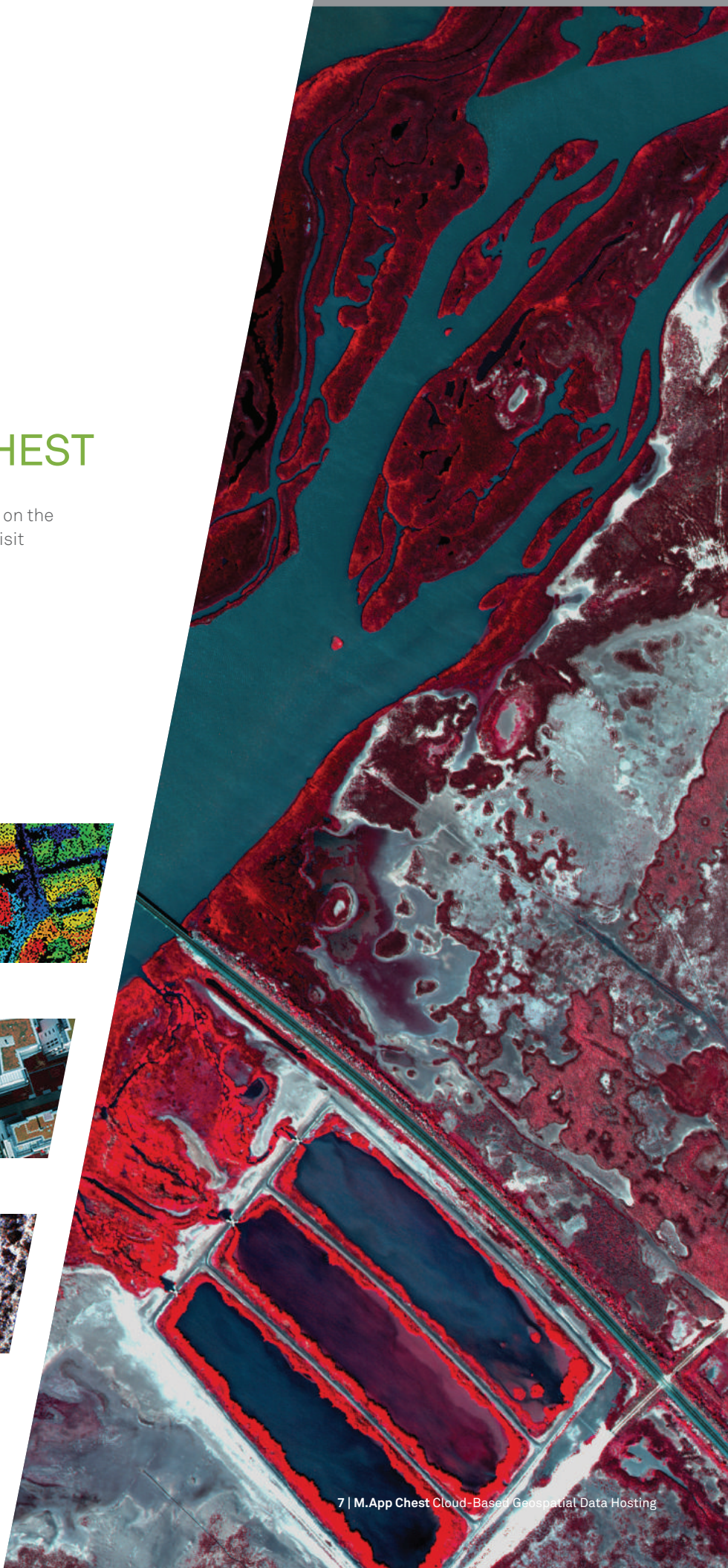
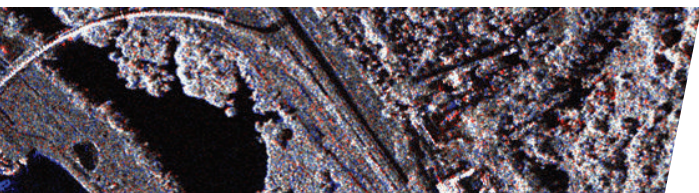
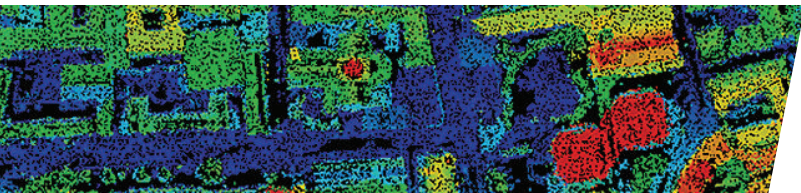
**Multispectral  
Imagery**

**Radar**



# SIGN UP FOR EARLY ACCESS TO M.APP CHEST

There has never been a better time to get your data on the cloud. To participate in our Early Access program, visit [hexgeo.co/MAppChest](https://hexgeo.co/MAppChest)





## ABOUT HEXAGON GEOSPATIAL

Hexagon Geospatial helps you make sense of the dynamically changing world. Known globally as a maker of leading-edge technology, we enable our customers to easily transform their data into actionable information, shortening the lifecycle from the moment of change to action. Hexagon Geospatial provides the software products and platforms to a large variety of customers through direct sales, channel partners, and Hexagon businesses. For more information, visit [www.hexagongeospatial.com](http://www.hexagongeospatial.com) or contact us at [marketing@hexagongeospatial.com](mailto:marketing@hexagongeospatial.com).

Hexagon Geospatial is part of Hexagon, a leading global provider of information technologies that drive quality and productivity improvements across geospatial and industrial enterprise applications. Hexagon's solutions integrate sensors, software, domain knowledge and customer workflows into intelligent information ecosystems that deliver actionable information, automate business processes and improve productivity. They are used in a broad range of vital industries. Hexagon (Nasdaq Stockholm: HEXA B) has more than 15,000 employees in 46 countries and net sales of approximately 3.1bn USD. Learn more at [hexagon.com](http://hexagon.com).

© 2015 Hexagon AB and/or its subsidiaries and affiliates. All rights reserved. Hexagon and the Hexagon logo are registered trademarks of Hexagon AB or its subsidiaries. All other trademarks or servicemarks used herein are property of their respective owners. Hexagon Geospatial believes the information in this publication is accurate as of its publication date. Such information is subject to change without notice.