

# **SATELLITE MONITORING OF LAND & INFRASTRUCTURES**

**Updated knowledge of  
land and infrastructure stability**

**Continuous monitoring of areas  
subject to subsidence or landslides**

**Increased capacity of protection  
of citizens and infrastructures**

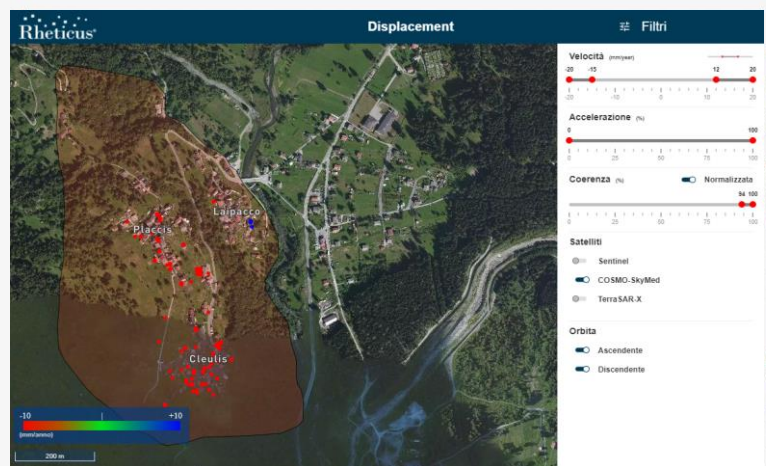
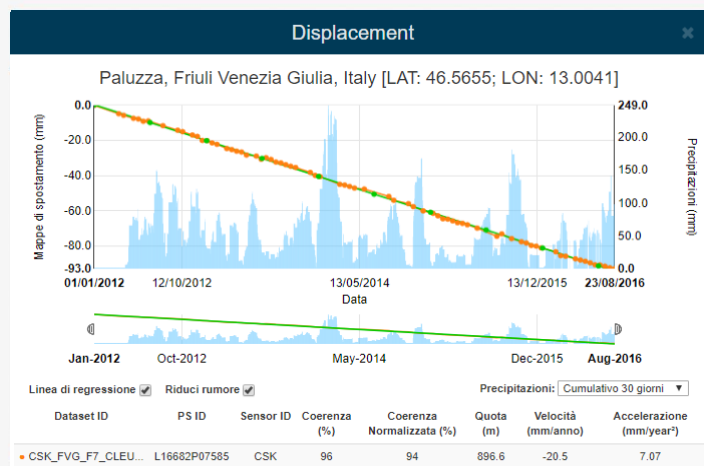
**Reduction of costs  
in service management**

# RHETICUS® DISPLACEMENT

Rheticus® Displacement is an automatic cloud-based geoinformation service designed for the monitoring of ground surface movements, infrastructure stability and areas subject to subsidence or landslides. A powerful dashboard gives access to timely and accurate information in form of dynamic maps, reports and alerts, fundamental for organizations and professionals working in engineering, utilities management, civil protection, master plan management and insurance.

## KEY FEATURES

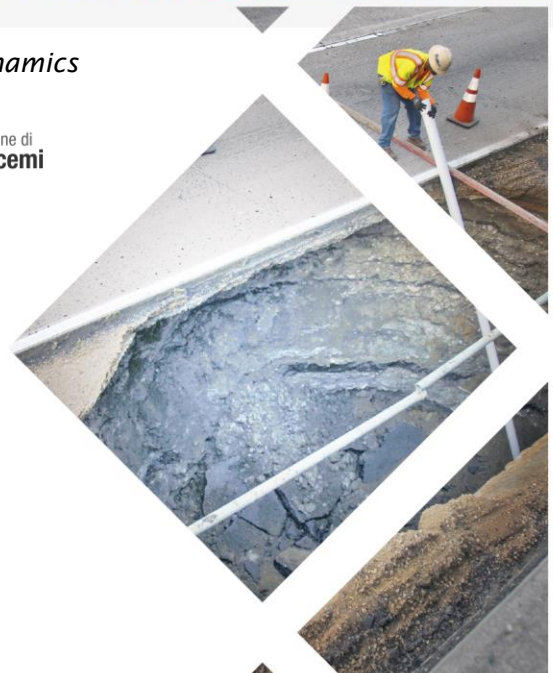
- Cloud-based service available by subscription
- Information derived from Earth observation satellite
- Maps, reports, alerts and dynamic geo-analytics
- Immediately effective with historical data analysis included



«This service gives us the opportunity to monitor in real-time the dynamics of ground movements and identify the most critical points.»  
Concetta Meli, Municipality of Niscemi, Sicily, Italy



Rheticus® Displacement	Landslides identification and monitoring for infrastructures planning and management
Rheticus® Marine	Marine water quality monitoring, turbidity, chlorophyll and sea temperature
Rheticus® Wildfires	Mapping and monitoring over the time of burned area
Rheticus® Urban Dynamics	Land cover monitoring



Live DEMO and services on [www.rheticus.eu](http://www.rheticus.eu)