

ER Mapper Image Web Server

8.0
What's new

Reprojection on-the-fly

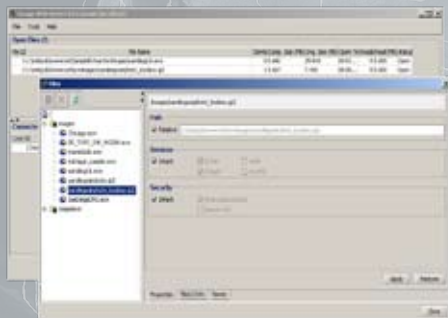
Let your users request images in the projection of their choice. Ensure projection compatibility with your imagery and other data used by your organization.

New Web 2.0 plugin-less web control

Provide fast access to high resolution imagery using the Web 2.0 protocol.

This new control provides:

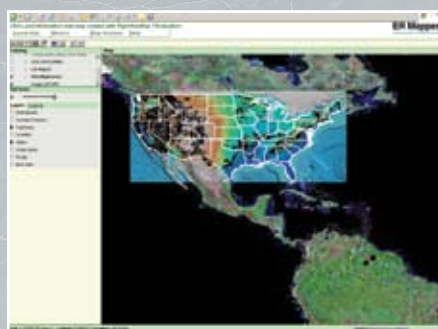
- Tiled map view control.
- Fade/transition effects for advanced web page authoring.
- Transparency support for ECW and JPEG 2000 layers.
- Reprojection on the fly.



Enhanced Image Web Server Console

There is now even greater flexibility in controlling your Image Web Server with a brand new, cross-platform Java administration interface. Some of the new features include:

- Independently expose ECW or JPEG 2000 files with different protocols, such as ArcIMS® or OGC WMS.
- Name and group WMS layers.
- Remote management of your server.
- Preview images whilst in the administration console.
- Enhanced ArcXML®/WMS configuration options.



More standards support

- Enhanced WMS 1.1.1 conformity.
- Combine multiple layers in a map request.
- Supports multiple WMS services.

Other features

- NULL cell handling for JPEG 2000 images in all protocols.
- Polygon clipping for WMS and ImageX services.
- Improved stability and scalability.

Enhanced ArcXML performance

Serve images even faster, when using ESRI's ArcXML protocol.

www.ermapper.com

ER Mapper
Geospatial Imagery Solutions



ER Mapper
image web server

ArcIMS and ArcXML and ESRI are trademarks or registered trademarks of Environmental Systems Research Institute, Inc (ESRI).