

# Earth Resource Mapping



**Version 1.0**  
**Product Launch Document**  
**May 2002**

---

# Table of Contents

<b>POSITIONING</b>	3
Positioning Statement	3
Problem/Solution Client Examples	3
Target Market	5
<b>PRODUCT DESCRIPTION</b>	6
New Features Overview	6
<b>PRODUCT INFORMATION</b>	8
New Components	8
Software and Hardware Requirements	8
Distribution Media	8
<b>PRODUCT MARKETING</b>	9
ER Mapper Web Site	9
Press Releases	9
<b>PRICING</b>	9
Pricing	9
<b>SUPPORT</b>	9
On-line Service	9
<b>FREQUENTLY ASKED QUESTIONS</b>	10
Frequently Asked Questions	10

---

# POSITIONING

## Positioning Statement

I-Wizard is a fast and simple application that allows users to seamlessly integrate Image Web Server delivered images into a dedicated ArcIMS web-site. I-Wizard combines ArcIMS' powerful vector and database capabilities with Image Web Servers groundbreaking raster delivery to provide the most complete geographical map serving solution in the market today.

## Problem/Solution Client Examples

I-Wizard solves many problems including:

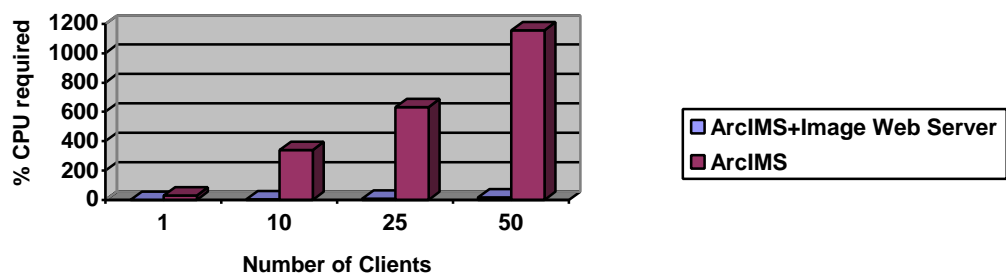
### Customer Problem 1:

- Customer cannot display large volumes of high-resolution digital imagery in their ArcIMS 3.1 solution in real time with true roam and zoom capabilities.

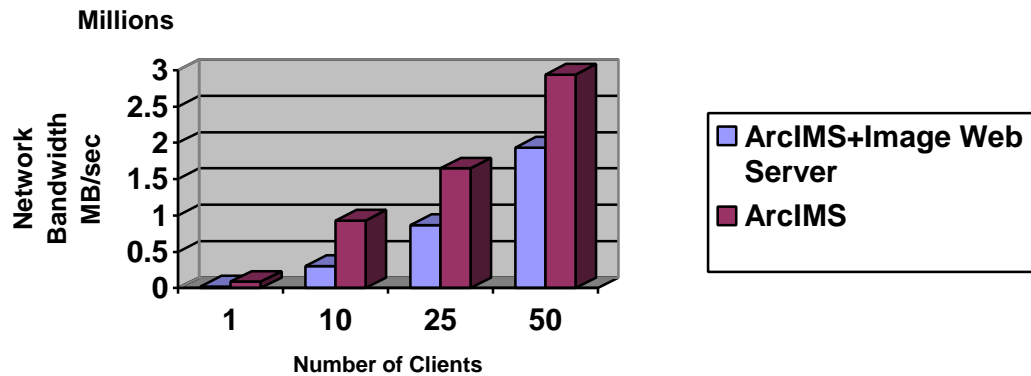
### Feature Solution 1:

- Use the I-Wizard to edit the clients ArcIMS 3.1 web pages to utilise the speed, efficiency and real time benefits of Image Web Server served ECW imagery. The following graphs demonstrate the typical performance gains in CPU and network usage when using Image Web Server with ArcIMS:

**CPU Requirements for 1 Second Response Time**



## Network Requirements for 1 Second Response Time



### Customer Problem 2:

- Customer needs to distribute truly georeferenced high-resolution imagery through their ArcIMS solution however does not have the storage capacity for GeoTiff files without vastly increasing hardware spend.

### Feature Solution 2:

- The I-Wizard enables ArcIMS to utilise ECW images, which use a fraction of the disk space when compared to GeoTiff files.

### Customer Problem 3:

- Customer is unable to display a single file in real time within their ArcIMS solution

### Feature Solution 3:

- The I-Wizard in conjunction with Image Web Server enables unlimited file sizes of ECW images to be viewed and manipulated in real-time within an ArcIMS application.

### Customer Problem 4:

- When images are added to a current ArcIMS site the load rates increase dramatically requiring additional CPU's, Memory and connection size.

### Feature Solution 4:

- Use the I-Wizard to integrate Image Web Server into an ArcIMS site removing the additional pressures by passing the load requirements of the imagery through to the Image Web Server's unique raster delivery mechanisms.

## **Target Markets**

The I-Wizard is applicable for both existing ArcIMS users and those that are contemplating it as a viable Internet/intranet GIS solution.

For Existing users who want to enhance their site with digital imagery:

- Use of unlimited amounts of geo-referenced raster data
- Real time viewing
- Real time Roam and Zoom functionality
- Take accuracy to the next level through digital imagery enabling enhanced business decisions

For Prospective users whom:

- Are considering an Internet/intranet solution
- Require a combination of both raster and vector solutions within one interface

With ArcIMS users in mind there are multiple target markets, however one key market is Local and State Government for the following reasons:

- Largest growth market and consumer of aerial photography
- Need to make use high-resolution imagery in combination with ArcIMS vector applications
- Experienced users of GIS technology
- Increased budgets for use of digital imagery

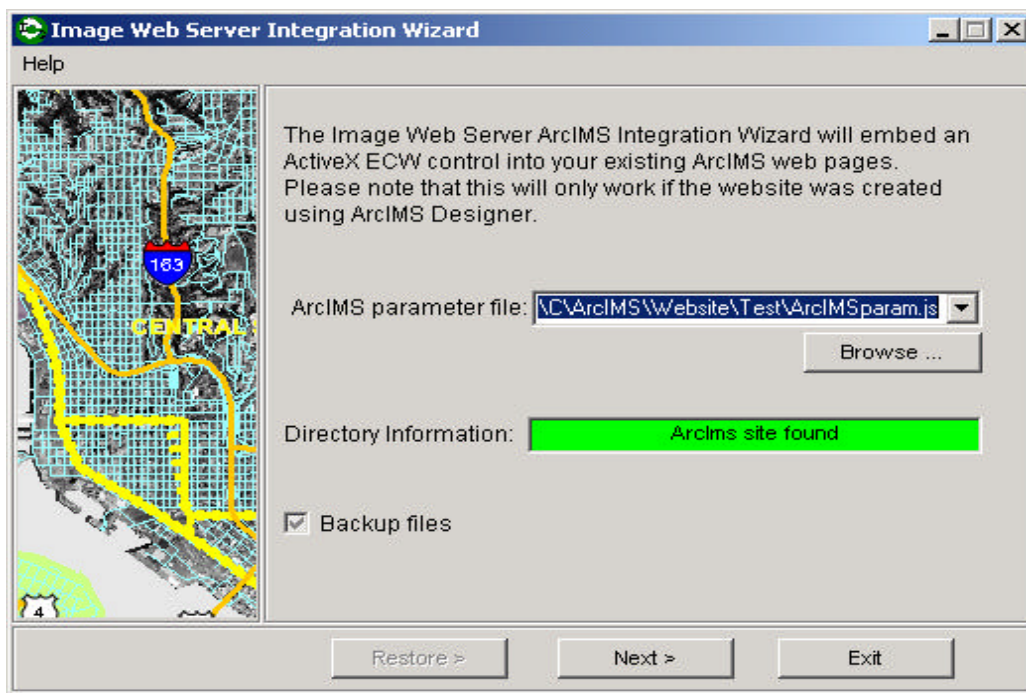
# PRODUCT DESCRIPTION

## New Feature Overview

I-Wizard is a simple and easy application used to integrate an existing ArcIMS 3.1 HTML web-site with Image Web Server 1.6. This is achieved by editing the html pages to incorporate the ECW ActiveX control. I-Wizard takes care of all the underlying JavaScript and DHTML without the user ever having to manually edit one page. There are three basic steps to integrating your site:

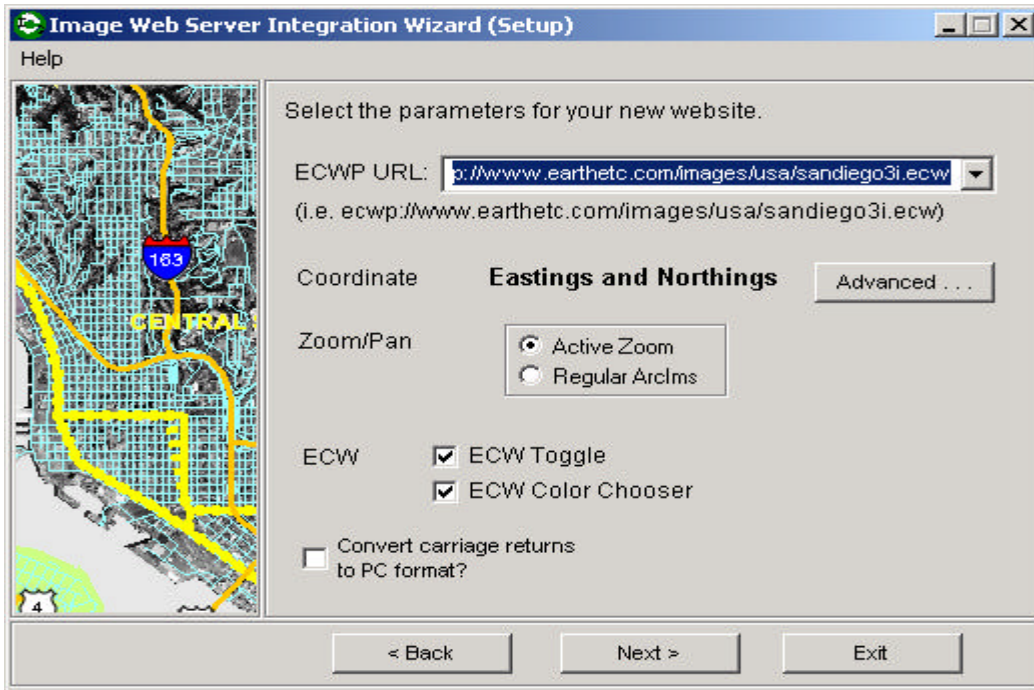
### I. Selecting the ArcIMS parameter file.

- I-Wizard automatically checks the selected file for integration compatibility before proceeding to the next step.



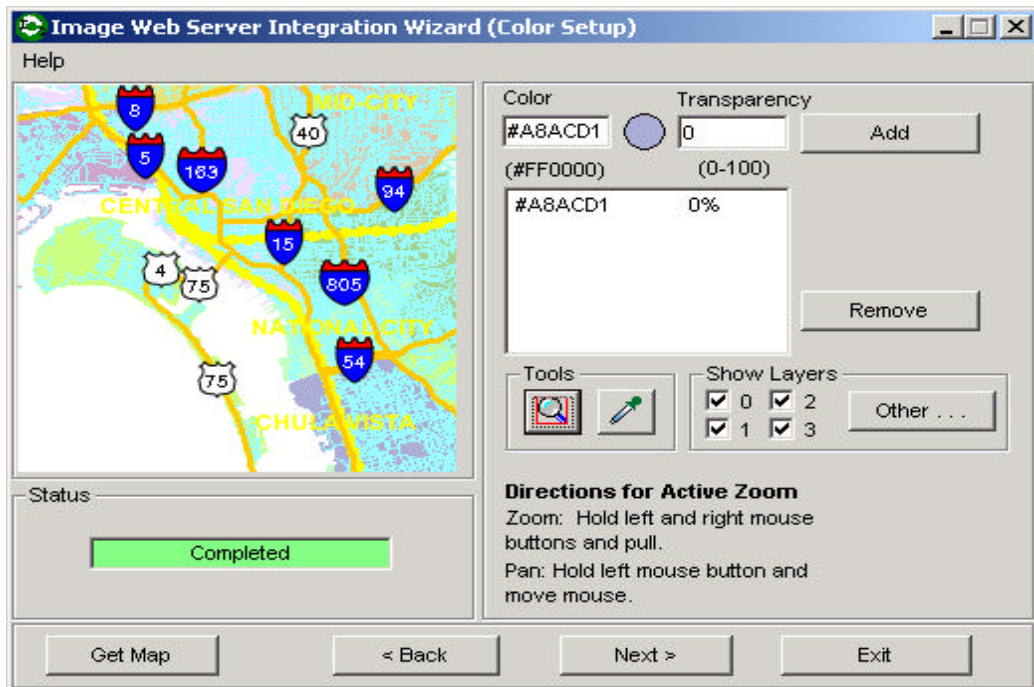
### II. Selecting the ECWP URL location

- In this step you will choose the location of the ECW file you wish to display under your ArcIMS vector information.
- You will also be given the choice of ECW Active Zoom or standard ArcIMS zooming and panning for map navigation.



### III. Selecting the colour set-up.

- With this step you will select the colours in the ArcIMS vector overlay that will be transparent and to what degree.



After you have completed the I-Wizard your new ArcIMS/Image Web Server web-site is ready to be viewed.

# PRODUCT INFORMATION

## New Components

I-Wizard is available for download from <http://www.ermapper.com> (1.758 KB)

## Hardware/Software Requirements

Windows Platform		
	Supported	Recommended
<b>Operating System</b>	<ul style="list-style-type: none"> <li>• Windows NT 4.0 SP3</li> <li>• Windows 98</li> <li>• Windows 2000</li> <li>• Windows ME</li> <li>• Windows XP</li> </ul>	<ul style="list-style-type: none"> <li>• Windows 2000</li> </ul>
<b>Processor</b>	<ul style="list-style-type: none"> <li>• Pentium® or higher IBM-compatible PC</li> </ul>	<ul style="list-style-type: none"> <li>• Pentium® 3</li> </ul>
<b>Web Browser</b>	<ul style="list-style-type: none"> <li>• Internet Explorer 4.01SP2 or higher</li> <li>• Netscape 4.5-4.7x</li> <li>• Netscape 6.2</li> <li>• Mozilla 0.9.8</li> </ul>	<ul style="list-style-type: none"> <li>• Internet Explorer 6</li> <li>• Netscape 6.2</li> </ul>
<b>Memory</b>	<ul style="list-style-type: none"> <li>• 8MB of RAM or higher</li> </ul>	
<b>Display</b>	<ul style="list-style-type: none"> <li>• Any 8, 16, 24 or 32-bit display</li> </ul>	<ul style="list-style-type: none"> <li>• 16 or 24/34 bit is recommended</li> </ul>
<b>Disk Space</b>	<ul style="list-style-type: none"> <li>• 3MB</li> </ul>	
<b>ArcIMS</b>	<ul style="list-style-type: none"> <li>• ArcIMS 3.1 HTML web-site created by ArcIMS developer (pages that have been altered may not work correctly) The imagery server must be set to PNG output. (Using JPEG or GIF output may have unexpected results).</li> </ul>	

## Distribution Media

I-Wizard available as a free download from our web-site: [www.ermapper.com](http://www.ermapper.com).

# PRODUCT MARKETING

## ER Mapper Web Site

[www.ermapper.com](http://www.ermapper.com)

The web-site contains FAQ's, a searchable knowledge base and technical documentation. This information is continually updated to ensure the latest product news is available and is available to all clients.

## Press Releases

Press Release: ERM launches I-Wizard

All press releases can be viewed at the following URL:

<http://www.ermapper.com/cgi-bin/press/presslist.cfm?view=>

# PRICING

## Pricing

I-Wizard is a free product.

# TECHNICAL SUPPORT

## On-line Service

Support pages are located on the ER Mapper web site [www.ermapper.com](http://www.ermapper.com).

# FREQUENTLY ASKED QUESTIONS

**Q. How does I-Wizard work?**

A. I-Wizard alters existing ArcIMS HTML pages by embedding an ActiveX control and changing JavaScript files to support the new control.

**Q. What will my clients need to view the integrated web-site?**

A. The requirements for a client are:  
IE4/NS4.5 or better, not including NS6, running on a Windows NT/98/2000/ME/XP machine. Image Web Server plug-in (automatically downloaded by client if not already installed)

**Q. Does ArcIMS 3.1 need a plug-in to use I-Wizard?**

A. No. I-Wizard does not integrate with the actual ArcIMS server. It is a client side solution that uses altered HTML and JavaScript to overlay ArcIMS vectors on Image Web Server imagery.

**Q. Do ArcIMS 3.1 and Image Web Server need to be on the same machine?**

A. No. Since I-Wizard is a client side solution the servers can be on two completely different machines.

**Q. Is there anything that I have to change on my ArcIMS 3.1 server?**

A. Yes. The only change needed is to set the imagery server that you will be using to output PNG type images. Using JPEG output will result in a spotty and unclear overlay as JPEG's use anti-aliasing.

**Q. Do I need to know HTML or JavaScript to use I-Wizard?**

A. No. I-Wizard makes it easy to integrate your existing ArcIMS web-site by gathering information from the ArcIMS parameter file and user input.

**Q. Can I undo the changes made by I-Wizard?**

A. Yes. All files modified by I-Wizard are copied and placed into a backup folder. To restore the files, just point I-Wizard to the same site and select restore.

**Q. Do my ECW files and ArcIMS web-site have to be in the same projection?**

A. Yes. If the ECW file is in another projection than the ArcIMS web-site they will not overlay correctly. All of your imagery will look off centred from your vector information or may not even show up.

**Q. Can I use I-Wizard on an ArcIMS web-site that has been modified?**

A. The technical answer is no. The I-Wizard was tuned to follow the ArcIMS web pages created by ArcIMS developer. Using I-Wizard on a modified web-site could have unexpected results.

**Q. Can my ArcIMS web-site be altered after I use I-Wizard?**

A. Yes. Once the I-Wizard has completed successfully you can alter the appearance and functionality of your web-site. Making changes to JavaScript may have unexpected results so it is important to always make backups.

**Q. Can I modify how I-Wizard changes my ArcIMS web page files?**

A. Yes. All I-Wizard modifications are catalogued into one file. This file is formatted in XML style tags. The tags are easily understood and changed. Adjusting this file may have unexpected results.

**I-Wizard for ArcIMS was created by Earth Resource Mapping and is not supported by ESRI®.**